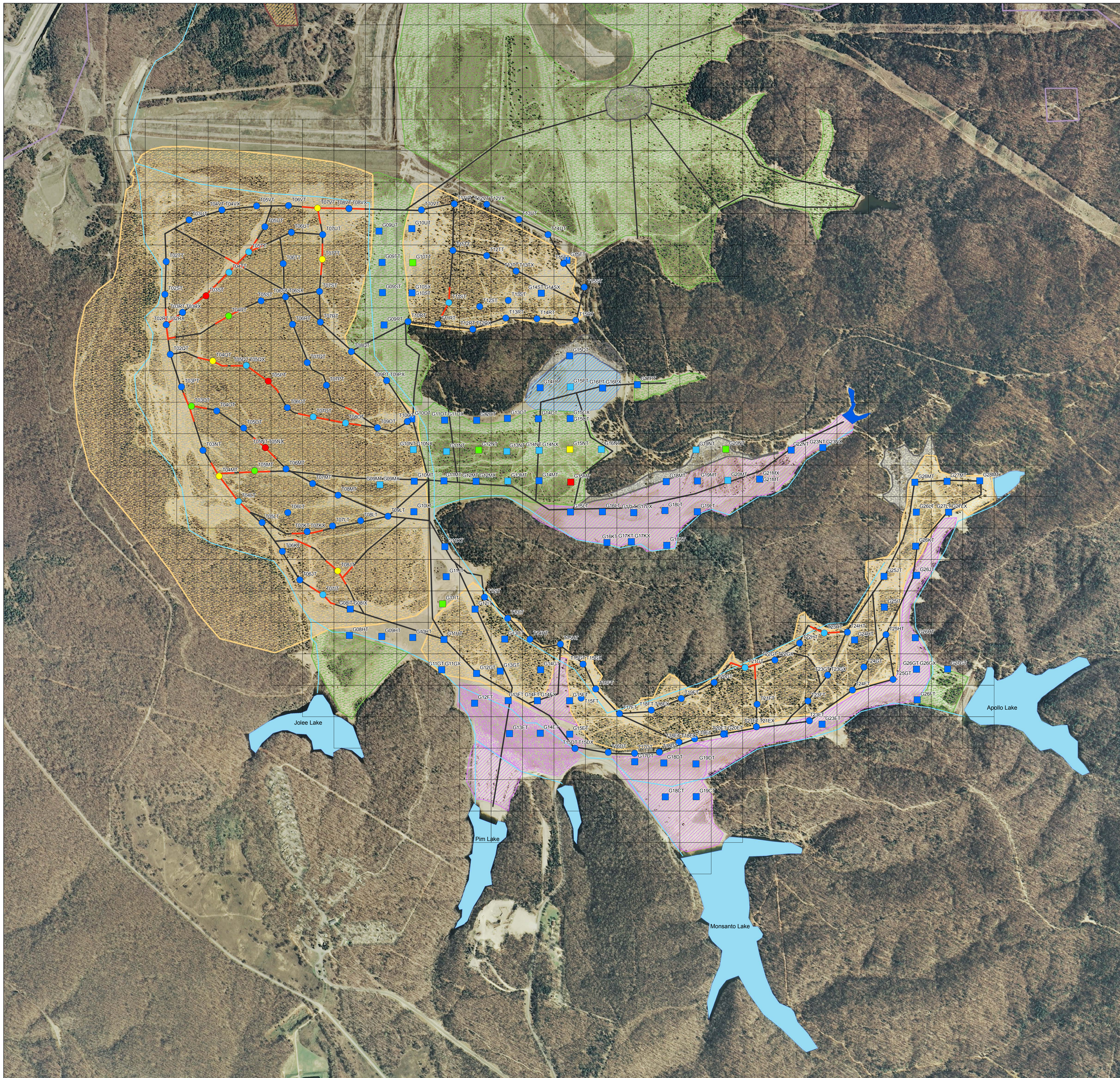


**Site Sampling Map
St. Joe State Park
St. Francois County
March 31 - April 17, 2008**



Legend

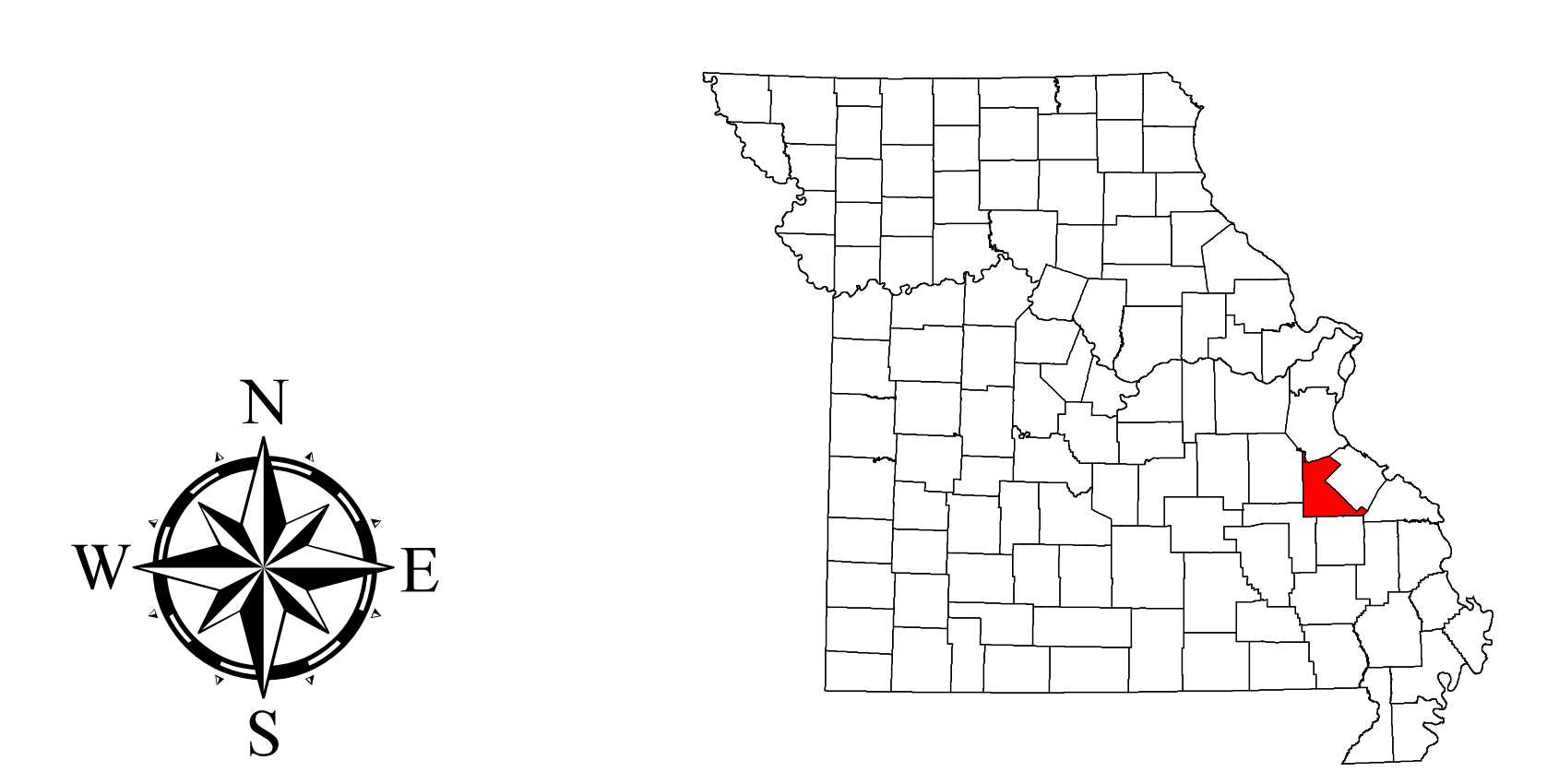
Soil Samples - Average Lead Level in parts per million (ppm)

Grid Trail

- 0 - 599
- 600 - 699
- 700 - 799
- 800 - 899
- 900 - 1014

- Trail Segments \geq 600 ppm
- Trail Segments $<$ 600 ppm
- Drainage Pathways
- Federal Pile Grid Lines
- Park Boundary
- Designated Trails/Enhanced Vegetation
- Lake/Impoundment
- Stormwater Control
- Proposed Sedimentation Basin
- Proposed Stormwater Retention Basin
- Rocked Slopes
- Open Flats
- Beginners Area
- Revegetate

Summary
Approximately 19 Grids $>$ 600 ppm and 55 (50m) Trail Segments $>$ 600 ppm



Map Created in August 2008 by Valerie Wilder and Debbie Boschert

Base Map: National Agricultural Imagery Program Aerial Photograph 2006.

Although data sets used to create this map have been compiled by the Missouri Department of Natural Resources, no warranty, expressed or implied, is made by the department as to the accuracy of the data and related materials. The act of distribution shall not constitute any such warranty, and no responsibility is assumed by the department in the use of these data or related materials.



**Missouri Department of
Natural Resources**
Division of Environmental Quality
Hazardous Waste Program

